

Wire Stripping Tools

Pro Stainless Steel Wire Strippers/Cutters/Crimpers

- Cutlery grade stainless steel prevents wear and corrosion, providing 5X longer life
- Precision ground strippers engineered for clean, easy insulation removal
- Professional, multi-function tool includes loop, non-obstructive lock mechanism, spring return, and high grade shears
- Long-life spring and low-profile lock for quick, repetitive stripping and cutting
- Vinyl cushion grip resists slipping and has an ergonomic fit



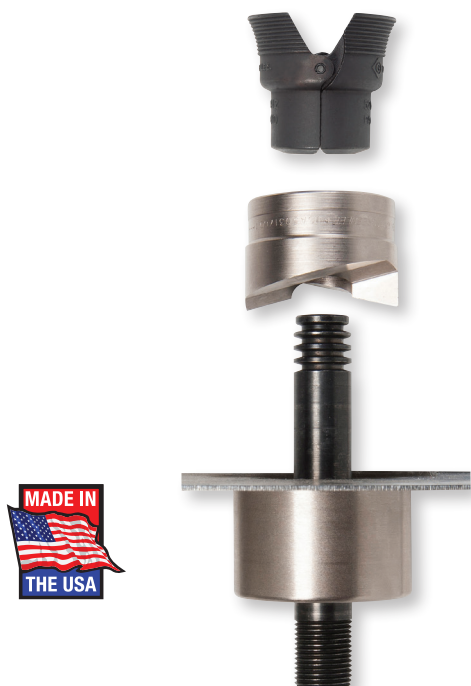
XT Cobalt Step Bits

- Cobalt HSS engineered for maximum life on stainless steel
- Dual-flute design makes for faster drilling with less force
- New split point tip eliminates walking and penetrates 10GA stainless steel in 10 seconds
- Steam oxide finish runs cooler and extends the life of the bit
- Made in the USA



SPEED PUNCH® Knockouts

- Save time and money with every punch! Longer tool life and faster punches – Knockouts are made in the USA
- Patent Pending “no thread” design eliminates cross-threading, while the innovative SPEED LOCK® mechanism quickly secures the punch in place
- Up to 3X faster set up and disassembly
- Use with manual-hydraulic and battery-hydraulic drivers
- SPEED PUNCH® knockout kit for mild steel available in 1/2" to 4" conduit sizes
- SPEED PUNCH® knockout kit for stainless steel available in 1/2" to 2" conduit sizes and punch up to 10 gauge (3.5mm) stainless and mild steel
- SPEED PUNCH® knockout set for oiltight punches with notches have push-button knockouts and are available in 22.5 mm & 30.5 mm notch hole sizes and used with manual-hydraulic and battery-hydraulic knockout drivers





Battery–Powered Knockout Kits

LS100L Battery – Powered Knockout Punch Driver

- Fastest, most powerful knockout driver available on the market today
- Works with all Greenlee knockouts
- “Auto Stop” Technology prevents damage to punch and die
- Key features include speed, versatility, ease-of-use and 11 tons of punching force
- 40% lighter than the competition
- Easily punch up to 6" conduit size holes in mild steel and 4" holes in stainless steel, with up to 2X faster cycle time
- Innovative technology and industry leading performance
- Punch holes at any angle with the 360° rotating head



Wire Crimping Tools

EK50ML Micro Crimping Tool

- World's first battery–powered crimping tool with PowerSense™ Technology
- Ergonomic; total weight less than 2.2 lbs
- Able to crimp terminals, twisted pair and coaxial cables
- Versatility provides the end user with the ultimate flexibility when approaching the job as well as increased productivity
- Crimp 3X faster and with 90% less hand force compared to ratcheting tools
- 250 crimps per cycle charge
- 65% faster crimping cycle
- Gator Eye® crimping diagnostics, and LED work light
- The EK50ML138 is compatible with all Greenlee Kwik Cycle® and CrimpALL® dies for various types of cables and sizes
- The EK50ML138 is compatible with the Ideal®: Crimpmaster™
- The EK50ML120 is compatible with the Wezag®: CS30, CS150, the Panduit®: CT-2600, CT-300, and Thomas & Betts®: Sta-Kon®



GTSD-1930



GTS-1930



GTS-THHN

Wire and Cable Stripping Tools

GTSD-1930 Saber™ Cable Stripping Tool

- Drill mounted ¼" quick connect hex chuck and a self-contained depth gauge for precise cutbacks
- Quickly engage to a variety of battery drills

GTS-1930 Saber™ Cable Stripping Tool

- Reverse compatible bushing engagement, spring-loaded retention pin, one-way ratchet, knurled handle for better grip, tension grip, lock nut, and laser etched depth stop

GTSD-1930 & GTS-1930 Saber™ Cable Stripping Tools

- Cable-specific sized bushings ensure the precise removal of the cable jacket
- Each bushing comes with a preset cutting blade for the specific cable diameter and jacket thickness
- Bushing compatibility – 70 different sizes of cable bushings available
- Copper and Aluminum cable types for THHN, XHHW, and THHN/XHHN
- Allows user to maintain control of the cutback throughout the stripping process
- Capacity: #6 AWG – 750 MCM
- Replaces knives when stripping cable
- Developed and designed to offer our customers a wide variety of features to ensure they complete their jobs; Faster, safer, and with more precision

Wire and Cable Stripping Tools

Universal Cable Stripper



JRF-4

- Developed and designed to enable our customers to quickly adjust, set, and strip a wide variety of cables
- Features include: Large capacity clamp jaw – Wide range, ½" – 3" cable outside diameter, enabling productivity when working with a variety of cable sizes
- Tension trigger – 150 lbs of clamping force allows user to securely capture cable for precise blade setting
- Delrin™ ball bearing rollers reduce the amount of force needed for the tool to move around and up the cable during stripping
- Rollerball actuation – allows user to maintain constant contact with the clamp as it moves around the cable
- Precision adjustable cutting blades – EPR and XLP design-specific blades allow for ease and efficient cut back

Cable Tray Feeder

CTF-200

- Modernized feeding solution that has been specifically designed to help mechanically feed electrical wires into cable trays, while quickly and securely mounting above the tray
- Quick clamping onto cable, can handle up to 2" (50.8mm) in outer cable diameter; up to 4" with extension kit
- Specifically designed to assist heavy load points around 90° bends, offsets, and vertical rises and drops, while not taking up space in the tray

INNOVATIVE

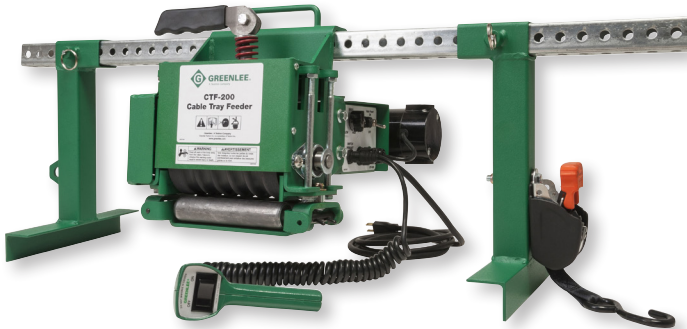
- First of its kind overhead mounted cable tray feeder

SAFE

- Easy configuration and safe operation using hand-held controller

SMART

- 200 lbs (90.7kg) of pulling force with an automatic force limiter

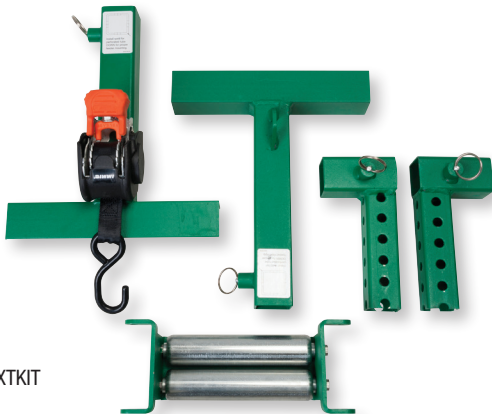


CTF-200

Cable Tray Feeder and Accessories

CTF-EXTKIT Extended Mount Accessory Kit

- Specifically designed to help modify the current CTF-200 configuration to allow the end user to feed electrical wire in outer diameter of 2" (50.8 mm) to 4" (101.6 mm)
- Greenlee's Cable Tray Accessories 660QA, CTR100, CTR200, CTF-EXTKIT complement the CTF-200 to maximize the efficiency of your cable tray pulls
- Easily handle forces of up to 100 lbs (45.4 kg)
- Designed and assembled in USA

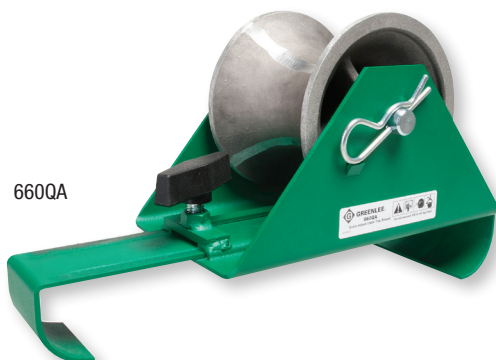


CTF-EXTKIT

Accessories to the Cable Tray Feeder

660QA Quick Adjust Sheave Roller

- Adjustable to fit on tray rung spaces up to 20" (508mm) apart
- For non-basket-style cable trays
- Cast aluminum sheave can easily handle forces of up to 100 lbs (45.4 kg)
- 7X faster setup and disassembly than competition
- One design quickly adjusts to fit common tray configurations
- Designed and assembled in USA



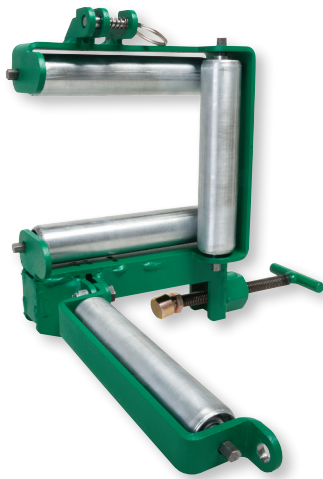
660QA

Cable Tray Feeder and Accessories

CTR100 Cable Tray Roller

- Quickly and securely attach to the side wall of a cable tray
- Uses quick release button which allows the users to attach and detach the roller guide to the tray
- 2X faster setup and disconnect with no loose pieces
- Four-conveyor roller guide with retained spring pull-pin release to easily remove cable
- Closed conveyor roller guide that traps cable within guide without damaging cable jacket
- Easily handle forces of up to 100 lbs (45.4 kg)
- Designed and assembled in USA

CTR100

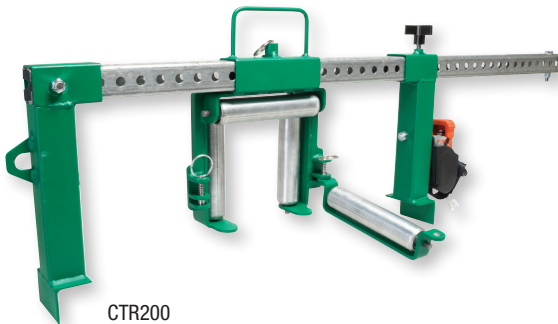


Cable Tray Feeder and Accessories

CTR200 Cable Tray Roller

- Quickly and securely mounts the four-conveyor roller guide above the cable tray
- Specifically designed to assist heavy load points around 90° bends, offsets, vertical rises and drops, while not taking up space in the tray
- The four-conveyor rollers securely trap the cable within the guide, while not damaging the cable jacket, allowing the cable to smoothly glide through
- Designed and assembled in USA

CTR200

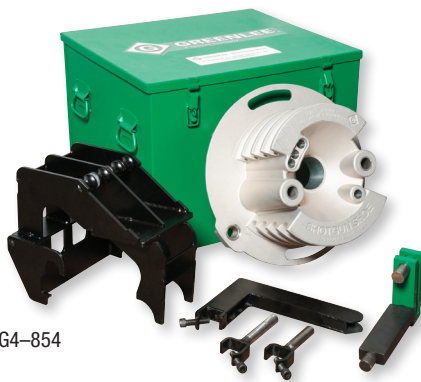




854DX

854DX Electric Bender

- Newly designed single shoe solution for electricians to reduce set-up time and increase bending time
- Bends 1/2" to 2" on EMT, IMC and RIGID conduit
- Simple rotation between vertical and horizontal bending configurations
- An absolute encoder stops bending at precise angles and a digital pendant is provided to set the angle and monitor the bend process
- Rated for 1,000,000+ bends with a solid state electronics system to eliminate arcing and prevent damage from temporary power loss



SG4-854

Shotgun™ Shoe for 854DX Benders

- Greenlee was the first to market with the Shotgun™ Shoe design, which allows contractors and prefabrication shops to bend up to four pieces of conduit at the same time
- Increases productivity, saves time and money.

VERSATILE

- 1 shoe bends 8 conduit types: RIGID 1/2", 3/4", 1"; IMC 1/2", 3/4", 1"; EMT 3/4", 1"

LIGHTWEIGHT

- Easy changeover and transportation



SG4

555® Shotgun™ Shoe

- Up to 2X faster bend cycle time – pays for itself in less than one year
- Adjust length indicator to set different heights for stubs and kicks
- Compatible with all 555® Benders
 - RIGID: 1/2", 3/4", 1"
 - IMC: 3/4", 1"
 - EMT: 3/4", 1"

COMPATIBLE

- Works with Greenlee 555C, 555CX, 555DX

PRODUCTIVE

- Bend up to 4 pieces of conduit at the same time

LIGHTWEIGHT

- Easily transported to be used in pre-fabrication shops and job-sites

Electrical Testers

TR-12A Self Testing Non-Contact Voltage Detector

- First non-contact voltage detector designed specifically to test tamper-resistant receptacles
- A second, non-sensing blade allows the TR-12A to open the protective shutters on these receptacles and test them for AC voltage presence
- Used to test conventional 120 volt receptacles
- Provides users with reliable voltage detection every time
- Bright LEDs flash and audible alarm sounds if voltage is present. Silent mode setting for use in quieter settings



TR-12A



Clamp-On Meters

Industrial Clamp-On Meters – 3 models available

- Measures AC+DC current and DC micro-amps, DC voltage, resistance, capacitance, temperature and frequency
- Flashlight inside clamp jaw
- Three-terminal phase sequence and motor rotation testing
- Records maximum, minimum, and average readings
- AmpTip™ for increased accuracy

General Purpose Clamp Meters – 5 models available

- True RMS measures AC and/or DC current
- Backlight & relative mode for added versatility
- Tests continuity and diodes
- AmpTip™ for increased accuracy

HVAC True RMS Clamp Meters – 2 models available

- Measures capacitance, temperature, DC microamps, AC current, AC/DC voltage, resistance, and more
- Three-terminal phase sequence and motor rotation testing
- AmpTip™ for increased accuracy



CLM-1000

Cable Length Meter

Standard Cable Length Meter

- Measures length of cable without removing it from spool, counting turns or weighing spool
- Push button sections of copper or aluminum cable
- Eight user-programmable settings for other gauges
- Powered by (6) 1.5V AA batteries
- CLM-1000 measures the following pre-set AWG wire gauges: 18, 16, 14, 12, 10, 8, 6, 4, 2, 1/0, 2/0, 3/0, and 4/0
- CLM-1000 measures the following pre-set kcmil wire sizes: 250, 350, 400, 500, 600, 750, and 1000
- CLM-1000E measures the following metric wire sizes: 0.75, 1, 1.5, 2.5, 4, 6, 10, 16, 25, 35, 50, 70, 95, 120, 150, 185, 240, 300, 400, and 500 mm²



7060-CFO

**Electronics not included*

Storage

Compact Field Office

- Mobile tech-ready work station*
- Allows user to have real time information where they need it
- Space for up to a 55" monitor, computer, and other electronic equipment – contractors can use electronic prints instead of struggling with big and often out-of-date paper prints

TOTAL MOBILITY

- Fits through 36" doorways
- 6" Non-marking casters
- Weather tight

TECH-READY

- Cable pass-through holes

SECURITY

- One single lock secures contents
- Shrouded padlock guard prevents theft



GMX-670K



CMK-910K



GMX-668K



GMX-661K



GMX-663K

Storage

Material Bundler (GMX-670K)

- Carry and store full bundles of conduit
- Size: 48.1" (1221.7 mm) L x 28.3" (718.8 mm) W x 36.4" (924.5 mm) H

Wire Dispenser (GMX-910K)

- Handles up to 14 x 2,000' spools
- Size: 63.5" (1612.9 mm) L x 31.5" (800.1 mm) W x 36" (939.8 mm) H

Material Tree (GMX-668K)

- Capacity: 1,600 lbs (400 lbs per arm set)
- Size: 48.5" (1231.9 mm) L x 28.3" (718.8 mm) W x 55" (1397 mm) H

Shelving (GMX-663K)

- Capacity: 400 lbs per shelf
- Size: 50.1" (1272.5 mm) L x 28.3" (718.8 mm) W x 60.2" (1529 mm) H

Flatbed (GMX-661K)

- Base rated at 2,500 lbs load capacity
- Size: 57.9" (1470.6 mm) L x 28.3" (718.8 mm) W x 32.7" (830.5 mm) H